



# GMT MONTHLY MEMBERSHIP PROGRESS REPORT

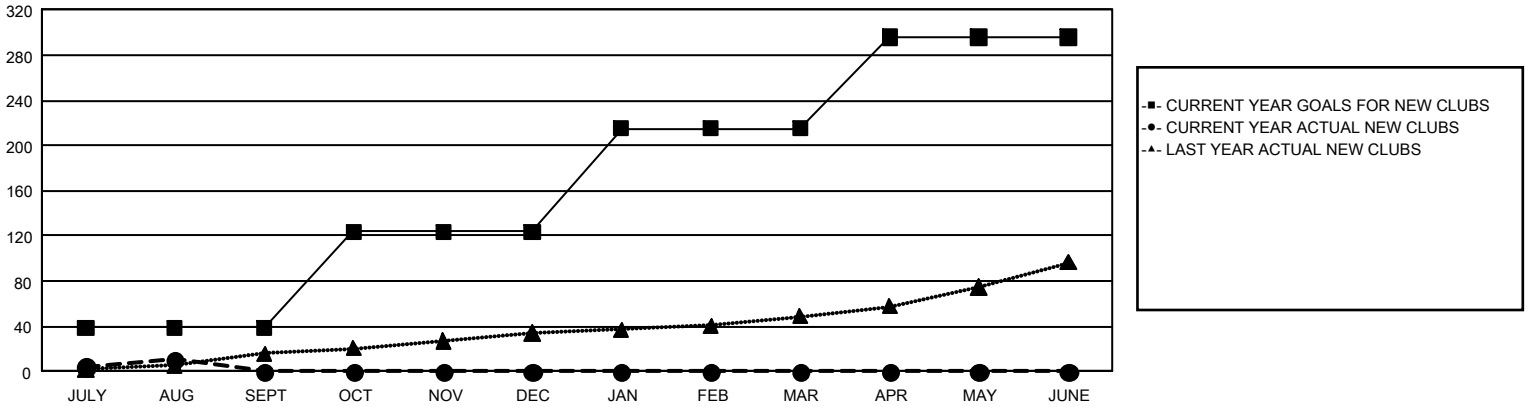
## GAT Constitutional Area 1

Results as of: 8/31/2024

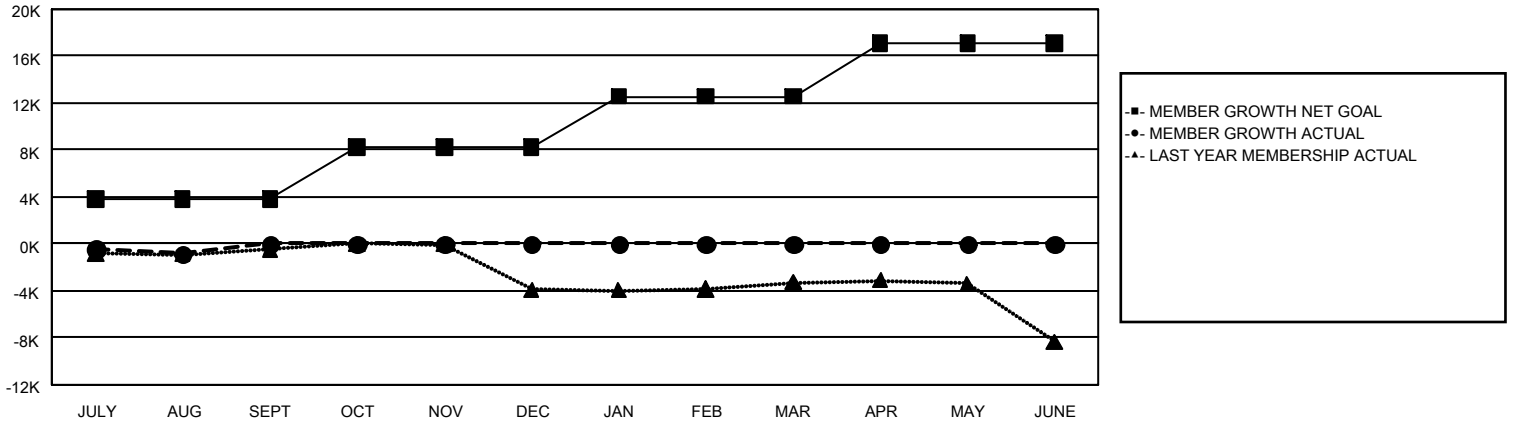
REPORT DOES NOT INCLUDE CLUBS IN UNDISTRICTED AREAS.

Clubs				Members			
RESULTS FOR 2024-2025				RESULTS FOR 2024-2025			
QUARTER	NEW CLUB GOAL	NEW CLUBS	DROPPED CLUBS	QUARTER	MEMBER GROWTH NET GOAL	MEMBER GROWTH ACTUAL	DROPPED MEMBERS ACTUAL (including transfers)
JULY/AUG/SEPT	39	11	28	JULY/AUG/SEPT	3,838	5,072	5,052
OCT/NOV/DEC	85	0	0	OCT/NOV/DEC	4,390	0	0
JAN/FEB/MAR	91	0	0	JAN/FEB/MAR	4,337	0	0
APR/MAY/JUNE	81	0	0	APR/MAY/JUNE	4,578	0	0

**GOALS AND ACTUAL NEW CLUBS CUMULATIVE**



**GOALS AND ACTUAL MEMBERS CUMULATIVE**



<b>DROPPED CLUBS: 28</b>	1,818 CLUBS OF 9,865 ADDED 1 OR MORE NEW MEMBERS	<b><u>GENDER DISTRIBUTION</u></b> MALE 164,300 (63.15%) FEMALE 95,702 (36.79%)
<b><u>DROPPED MEMBERS</u></b> DECEASED 544 CLUB CANCELLED 162 OTHER 4,288 <b>TOTAL 4,994</b>	<a href="#">CLICK HERE FOR CUMULATIVE MEMBERSHIP DATA</a>	TOTAL FAMILY UNIT MEMBERS 50,925  FAMILY MEMBERS PAYING HALF DUES 26,308